

## *Kiroro Resort Winter Season News, November 2017*

### **Season Opens 23rd November 2017**

#### **Kiroro Resort is giving you even more to enjoy this winter!**

Hokkaido is world renowned for powder snow of exceptional quality and beautiful mountain views. Within Hokkaido's mountains you will find Kiroro Resort offering a wealth of snow, ski and boarding experiences to enjoy to the utmost. With 22 varying runs to discover there is still so much more than just skiing and snowboarding on offer. Plenty of great snow activities, a snow park and two international hotels delivering you a warm, comfortable room and an expansive array of Hokkaido's best food.

#### **The view just got better at POP Restaurant (The Kiroro, a Tribute Portfolio Hotel).**

POP Restaurant has extended due to popularity and now also provides stunning views across the snow-capped landscape. Enjoy the beautiful scenery whilst tasting delicious local specialties for breakfast and dinner.

#### **The Mountain Bar is open (Sheraton Hokkaido Kiroro Resort)**

Exit the slopes and walk in to the new Mountain Bar on the 2<sup>nd</sup> floor of the Mountain Center. Perfect for après, cold beers and wines after a fantastic day on the mountain, overlooking the night skiing. Tell all your skiing stories with a cold beverage in friendly company.

#### **Kiroro Town welcomes a new Lounge & Bar, "Popke" (The Kiroro, a Tribute Portfolio Hotel)**

In beautiful lounge bar setting, straight from finishing a day on the slopes or an after dinner drink, join us in Popke for a friendly atmosphere of cold drinks and a warm atmosphere.

#### **Ice Star Hotel & Restaurant, Kiroro – Open Mid-December**

Constructed from water and ice, the newly established Ice Star Hotel & Restaurant offers a unique experience and alluring dining atmosphere. The Ice Hotel, Ice Restaurant and Ice Bar create a special experience unlike any other.

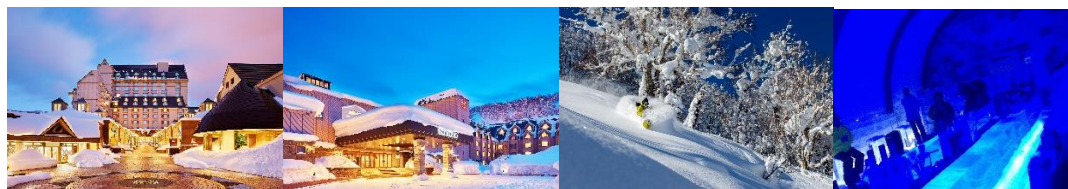
Open for a limited time from mid-December 2017 to March 2018, the ice experience is complete with a genuine food experience of Swiss fondue made with cheese imported from Switzerland, and complimented with a cocktail served in an ice glass. (Operation dates may vary according to snow conditions.)

### **Enjoy all the powder snow and more with new contents for the mountain**

- ◆ The addition of the new Connector Link that joins Asari Dynamic course and Center course brings the total to 22 runs.
- ◆ The Kids Patrol Squad program gives children the opportunity to experience what it is like to be a member of the Kiroro Patrol team and go on patrol together. Free to join!
- ◆ The Kizuna Forest Panorama tour will guide groups of up to 8 people comfortably to their destination in our new Piston Bully 100 snowcat.



Kiroro Resort, panoramic view looking towards The Kiroro, a Tribute Portfolio Hotel – Iconic Hokkaido



The Kiroro, a Tribute Portfolio Hotel

Sheraton Hokkaido, Kiroro Resort

Kiroro Snow World

Ice Star Hotel & Restaurant

Enquiries: Kiroro Hotels Co, LTD. Marketing Department

Tel : 0135-35-3124 Toshiya Nakazawa

E-mail: [toshiya.nakazawa@sheratonkiroro.com](mailto:toshiya.nakazawa@sheratonkiroro.com)